



## ◆ Single Port Gigabit PoE Splitter with Dual Output 5V/12V – 25.5W

### ➤ Features

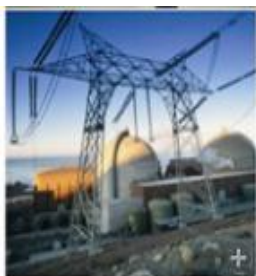
- Dual output, 5V/ 12V DC output, can be adjustable
- Compatible with IEEE 802.3at PSE devices
- Support 10/100/1000M data transmission through RJ45
- Auto-negotiation and auto-MDIX fast Ethernet RJ45 port
- Both mid-span ( 4/5+, 7/8- ) and end-span ( 1/2+, 3/6- )
- IEEE 802.3i; IEEE 802.3u; IEEE 802.3x Flow Control; IEEE 802.1af DTE Power via MDI
- 1000Base-TX (Less than 100 meters, Catalogue 5 cable)
- Splits the 48V DC power over RJ-45 Ethernet cable into 5V/ 12V DC output



### ➤ Introduction

While working with the IEEE 802.3af power source equipment (PSE), and auto-detect the IEEE802.3at PoE equipment, protects devices from being damaged by incorrect installation. This single port PoE splitter supports the deployment from restrictions of power outlet locations, which eliminates the costs for additional AC wiring and reduces the installation time. Data and power transmission distance can be up to 100 meters.

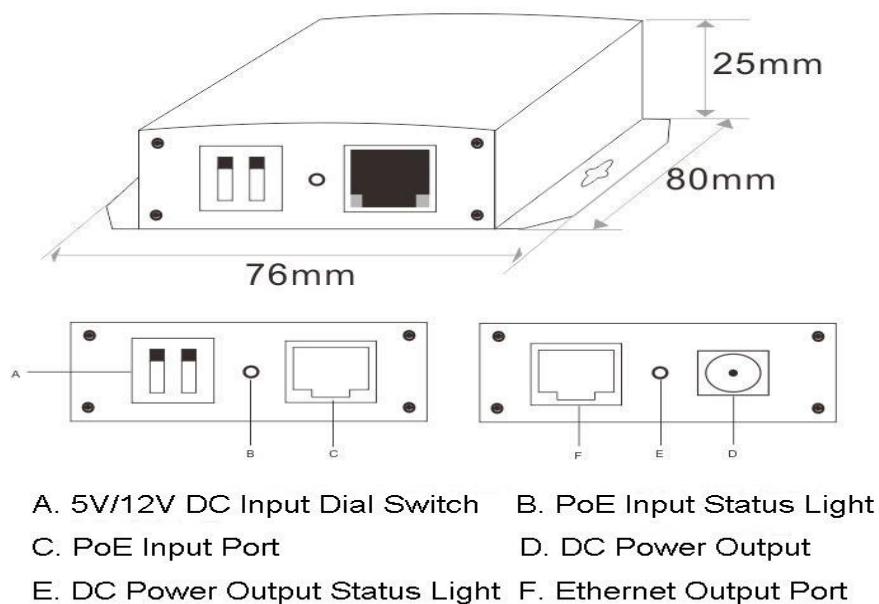
For the cost saving and power management purpose, the PS101G-at is the ideal IEEE 802.3at Power over Ethernet device that splits the 48V DC into 5V/12V DC power output through the RJ-45 Ethernet cable. It complies with IEEE 802.3at Power over Ethernet, IEEE 802.3/802.3u 10/100Base-TX Ethernet standard.



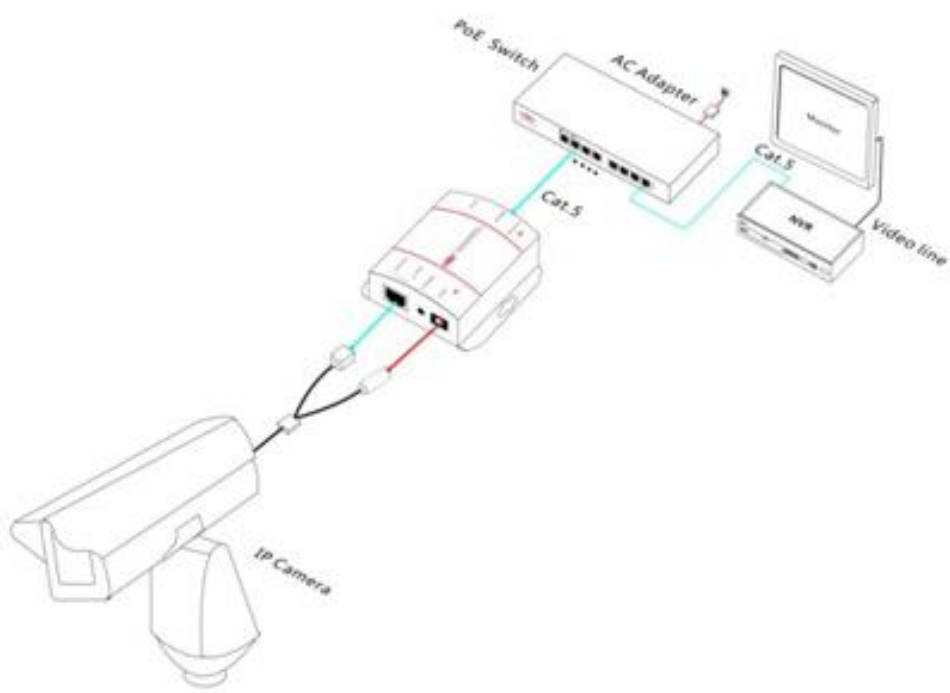
## ➤ Specification

Description	Splits the 48V DC power over RJ-45 Ethernet cable into different DC output; Compatible with IEEE 802.3af standard PSE devices
Standards	IEEE 802.3i 10BASET IEEE 802.3u 100BASET IEEE 802.3ab 1000BASET IEEE 802.3x Flow Control IEEE 802.1af DTE Power via MDI IEEE 802.3at
Port	Input port: PoE port; Output: DC 5V/ 12V, RJ45 port
Network Medium	1000Base-TX ( less than 100 meters, Catalogue 5 cable)
Features	IEEE802.3at Power over Ethernet, 25.5W(IEEE802.3at) Mid-span(4/5+, 7/8- ), end-span(1/2+, 3/6-)
Dual Output	5V/ 12V DC output
Dimensions	80*76*25mm
Weight	0.2kg
Operating temperature	0 to 55 °C
Storage temperature	-20 to 75 °C
Safety	CE Mark ,commercial, FCC Part 15 Class B, RoHS
Warranty	1 year warranty, life-long maintenance

## ➤ Dimension



## ➤ Application



## ➤ Ordering Information

Model NO.	Description
PS101	10/100M; IEEE802.3af, 15.4W, 2x RJ45 ports, 1x DC port; 5V/ 12V DC output
PS101-at	10/100M; IEEE802.3at, 25.5W, 2x RJ45 ports, 1x DC port; 5V/ 12V DC output
PS101G	10/100/1000M; IEEE802.3af, 15.4W, 2x RJ45 ports, 1x DC port; 5V/ 12V DC output
PS101G-at	10/100/1000M; IEEE802.3at, 25.5W, 2x RJ45 ports, 1x DC port; 5V/ 12V DC output

## ➤ Packing List

- 10/100/1000M Single Port PoE Splitter with Dual Output 25.5W
- User manual × 1
- Warranty card × 1